



Community LCAP Meeting 1

March 8, 2021

Spanish Slides at bit.ly/LCAP1SPAN

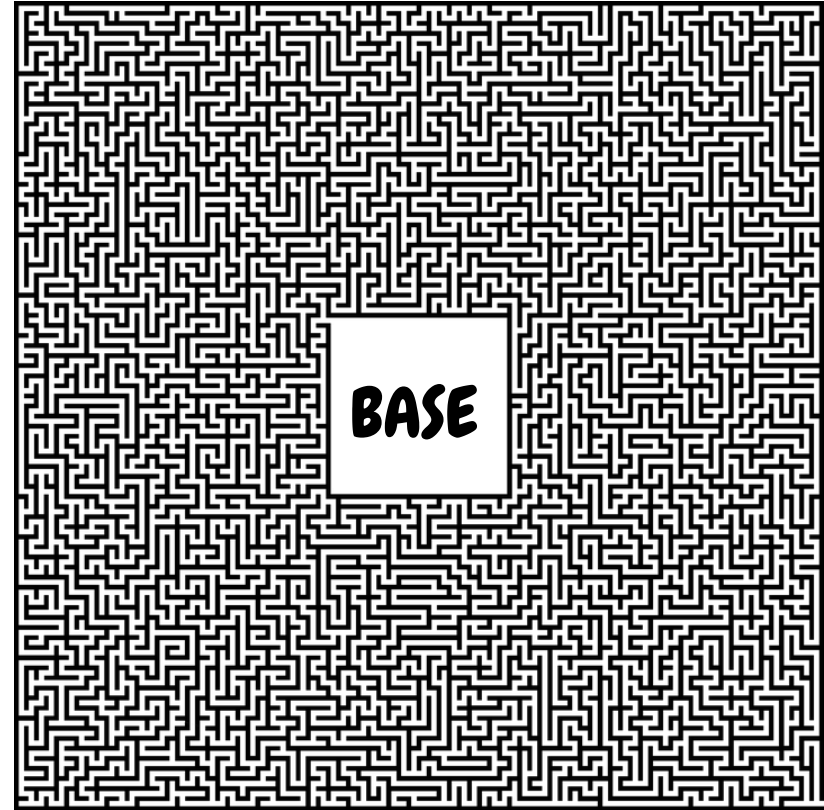
- Welcome, Introductions, and Comments
- LCAP 101
- Stakeholder Engagement
- Overview of the process & timeline of GUSD LCAP development



LCAP 101

Once upon a time in California's Education Funding...

- There was **base funding**
 - (based on avg. attendance)
- And there were **categoricals**
 - (over 50 state & federal pots)
 - A maze of compliance and reporting



Then came the Dark Ages of Education Funding...

2008-09

Meteoric crash in budgets pushed the state to remove MOST categorical restrictions.

Monies were “swept” together and could be spent on keeping basic school functions intact.



And Finally a New Dawn in Education Funding...

In 2013, came the LCFF*

1. **Base funding** (based on ADA)
2. **Categoricals** (now less than 10)
3. **Supplemental and Concentration**
(aka S&C money)

**Local Control Funding Formula*



The Current Reality - Local Control Funding Formula

- Provides more flexibility and local control in decisions regarding student achievement.
- Involves parents, students, and teachers in decisions about academic programs and expenditures.
- Includes additional funding for at-risk/high need students
 - Socioeconomically Disadvantaged, English Learners, Foster
 - This is referred to as Supplemental & Concentration money
- Requires districts to develop a three-year plan for achieving specific student outcomes, adjusted yearly.

LCAP Goals, Actions, & Expenditures

- Districts develop GOALS for student outcomes to support the eight state priorities (see your priorities handout) and the board's goals.
- District must develop ACTIONS and SERVICES to meet each goal and assign funding.
- Districts must also develop ADDITIONAL ACTIONS to support high need students in meeting goals using S&C funding.
- Districts must seek stakeholder input during development of the plan each year and report out progress as well.

Current LCAP Goals - All Aligned to Board Goals

1. All students will have a safe and supportive school culture, climate, and learning environment that encourages physical, mental, and emotional health.
2. All students will graduate from high school ready for college or career
3. All students will achieve proficiency in core subject areas (ELA, math, science, social studies) as measured by state assessment data (CAASPP).

Data Builds LCAP Goals and Measures Progress

Different **metrics** or **measures** are used such as:

- Attendance rates
- Drop-out rates
- Language proficiency
- Facility status
- Test scores
- Suspension rates

California's new accountability system for continuous improvement is called the California Dashboard



**Stakeholder
Input & Role**

Ways We Collect Stakeholder Input

- **Parent and Student Surveys** indicate areas of strength and areas for growth related to the eight state priorities
- **Community Forums/LCAP Advisory Committee** offers stakeholders an opportunity to give input on goals and actions for student achievement
- **Online LCAP Feedback** portal is open on the district website for stakeholders to provide feedback and ask questions
<http://www.gusd.org/Local-Control-Accountability-Plan-LCAP/index.html>
- **Advisory Groups** (e.g. School Site Council) provide input on developing goals and actions during regularly held meetings
- **Individual School Site Meetings** allow stakeholder groups to provide input as it related to their specific school site

What can I do as a Stakeholder?

- Be aware of the goals of the district and each site.
 - Join site-based committees or attend meetings
- Ask Questions - in person, or by the website
- Educate yourself about the metrics using the Dashboard
 - <https://www.caschooldashboard.org/>



Red



Orange



Yellow



Green



Blue

LOWEST PERFORMANCE

HIGHEST PERFORMANCE

State Indicators

- 6 state indicators
- Pre-populated by the state
- Quantitative data

5 Performance categories:

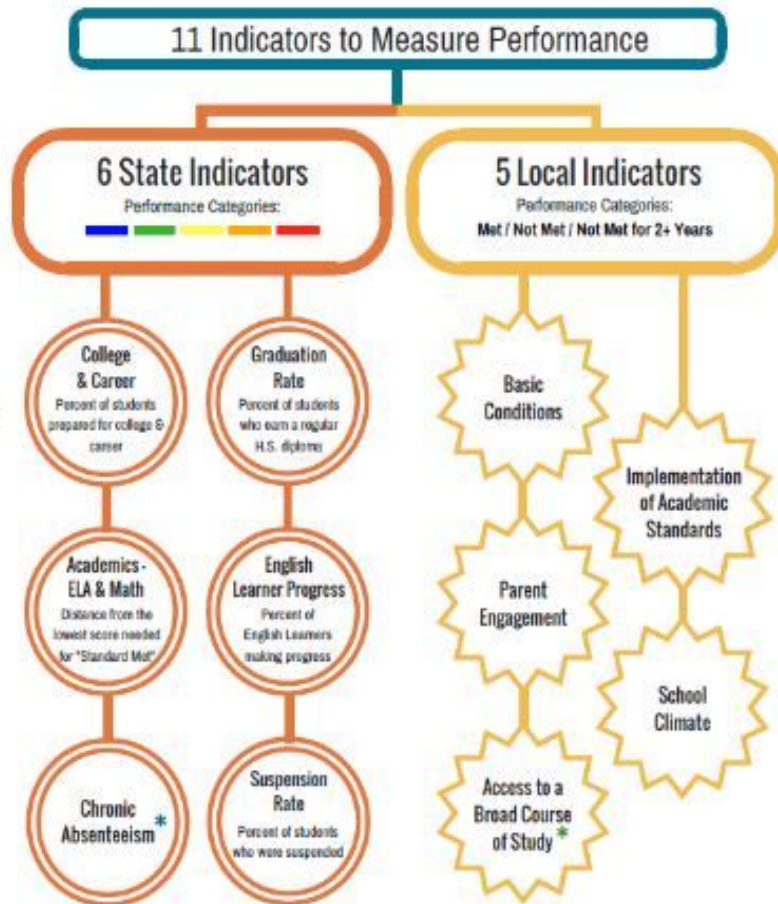
Blue

Green

Yellow

Orange

Red



Local Indicators

- 5 local indicators
- Districts populate them with analysis of progress from local data
- Qualitative + quantitative data

3 Performance categories:

Met

Not Met

Not Met for 2+ years



**2021 LCAP
Timeline**

2021 LCAP Timeline


March 8: Initial Stakeholder Engagement;
Discussion of process and timelines

April 12: Annual Update; Drafting LCAP based
on stakeholder input & data analysis

May 3: Budgeting & drafting of actions &
services continues; Draft LCAP presented to
advisory committees

June: Public hearing June 16; Continued
stakeholder input; Final Draft to Board June 30





**Thank you for
joining us!**
April 12 - Data